



Razumevanje sprememb v rečnih okoljih s prepletanjem daljinskega zaznavanja in antropoloških raziskav

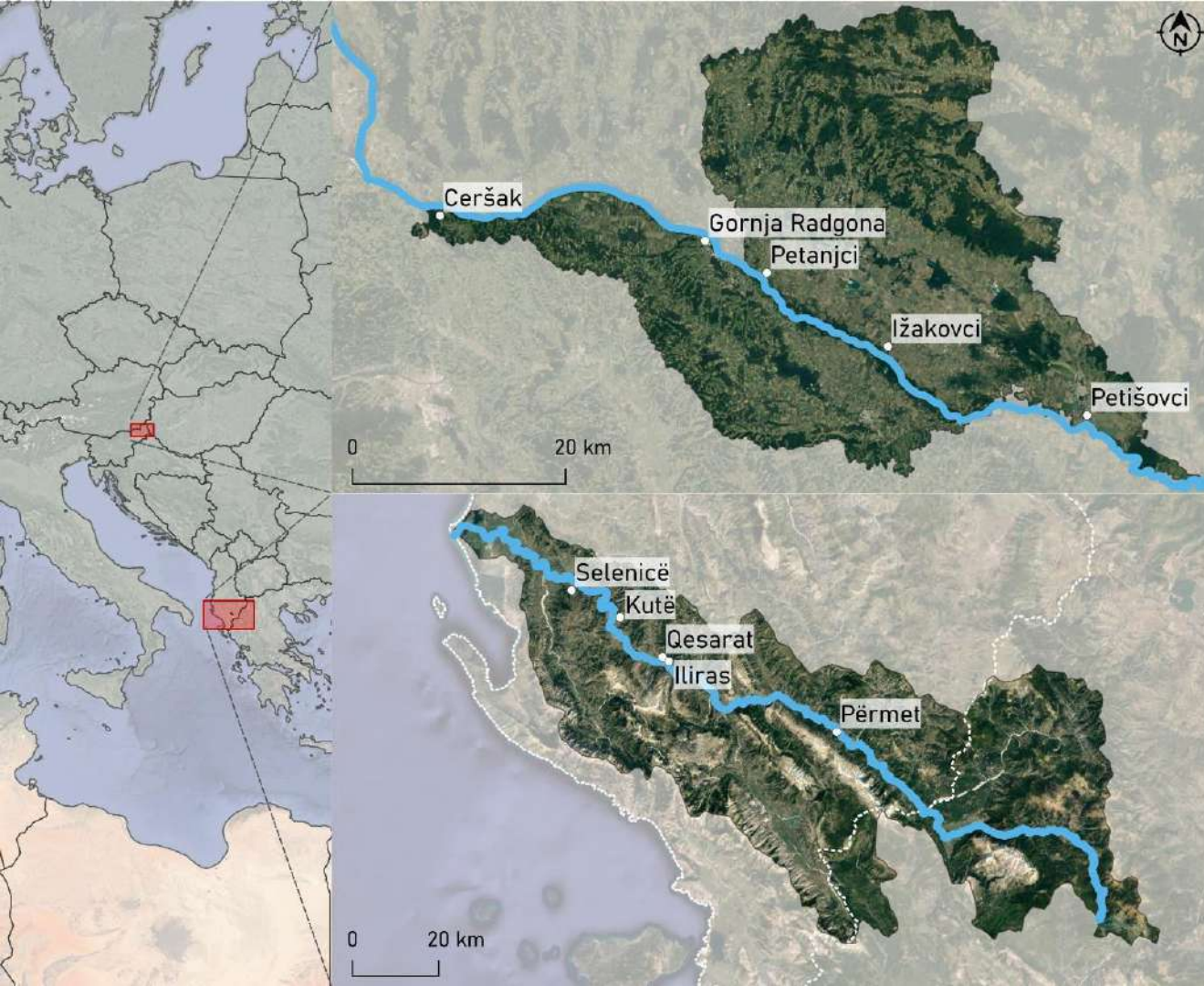
**Liza Stančič, Nataša Gregorič Bon, Nejc Čož, Urša Kanjir; ZRC SAZU
Damir Josipovič; INV**



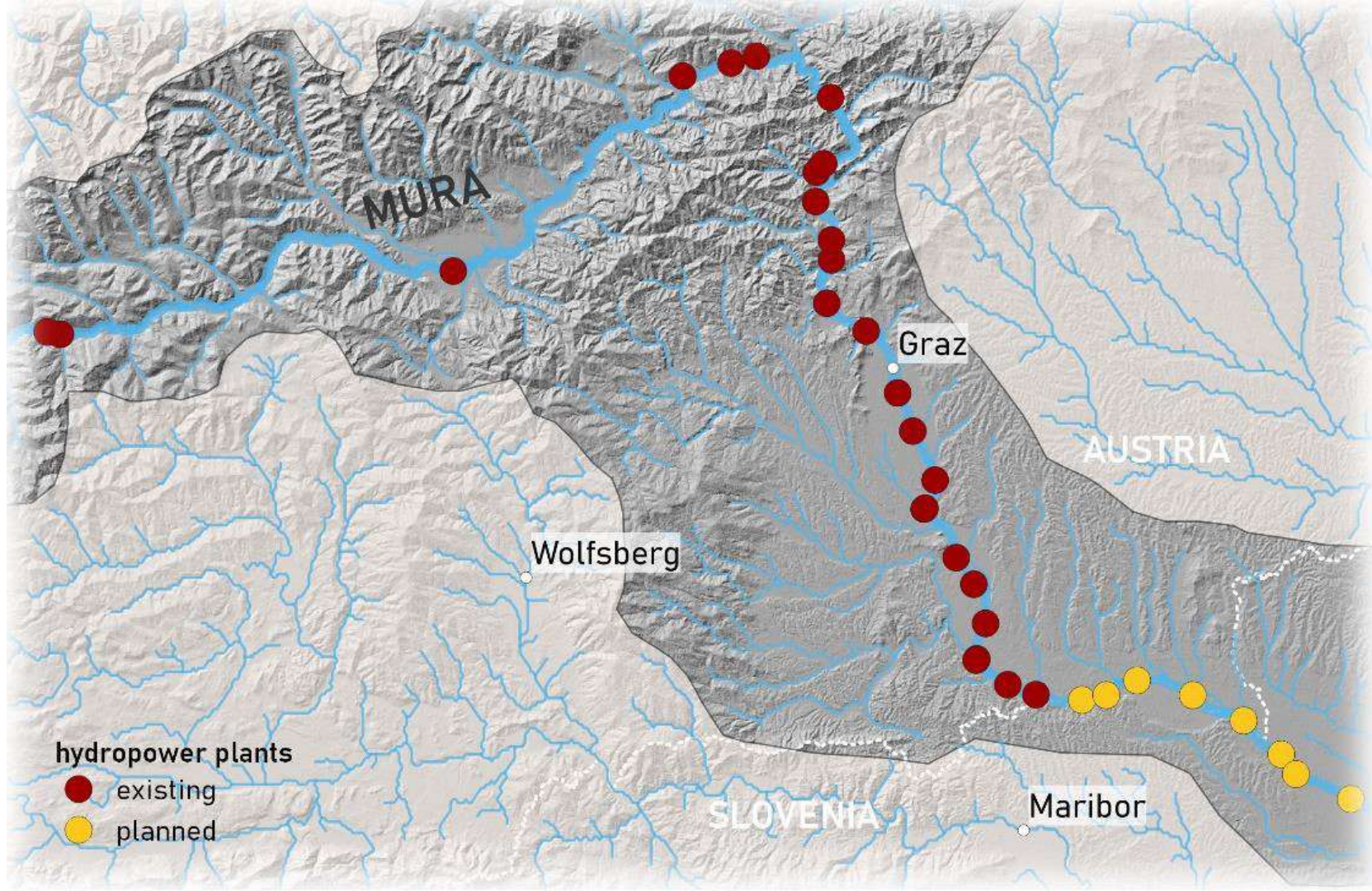
Dinamična rečna okolja

Kako lahko novi podatki pomagajo pri primerjavi dveh okolij z zelo različno zgodovino posegov?

- potek sprememb in lokalno dožemanje
- boljše upravljalvske odločitve in okoljske politike

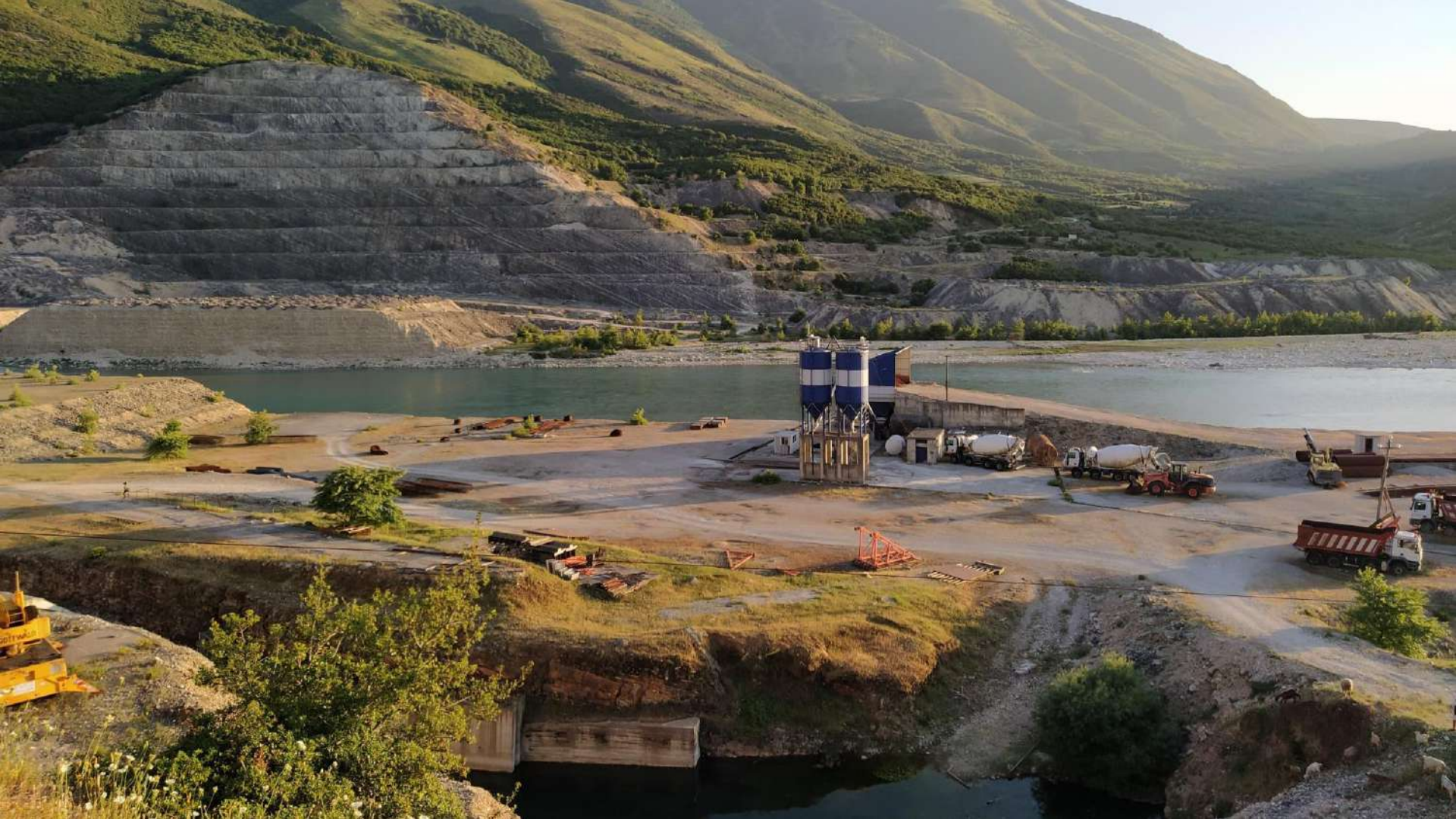


snežno-dežni režim
letni pretok 150 m³/s
čezmejni porečji









A scenic landscape featuring a pond with lily pads, surrounded by trees and a clear blue sky. The pond is filled with green lily pads, and the water reflects the surrounding trees and sky. The trees are lush and green, with some showing signs of autumn. The sky is a clear, bright blue. The overall scene is peaceful and natural.

Zaznavanje prostorskih sprememb

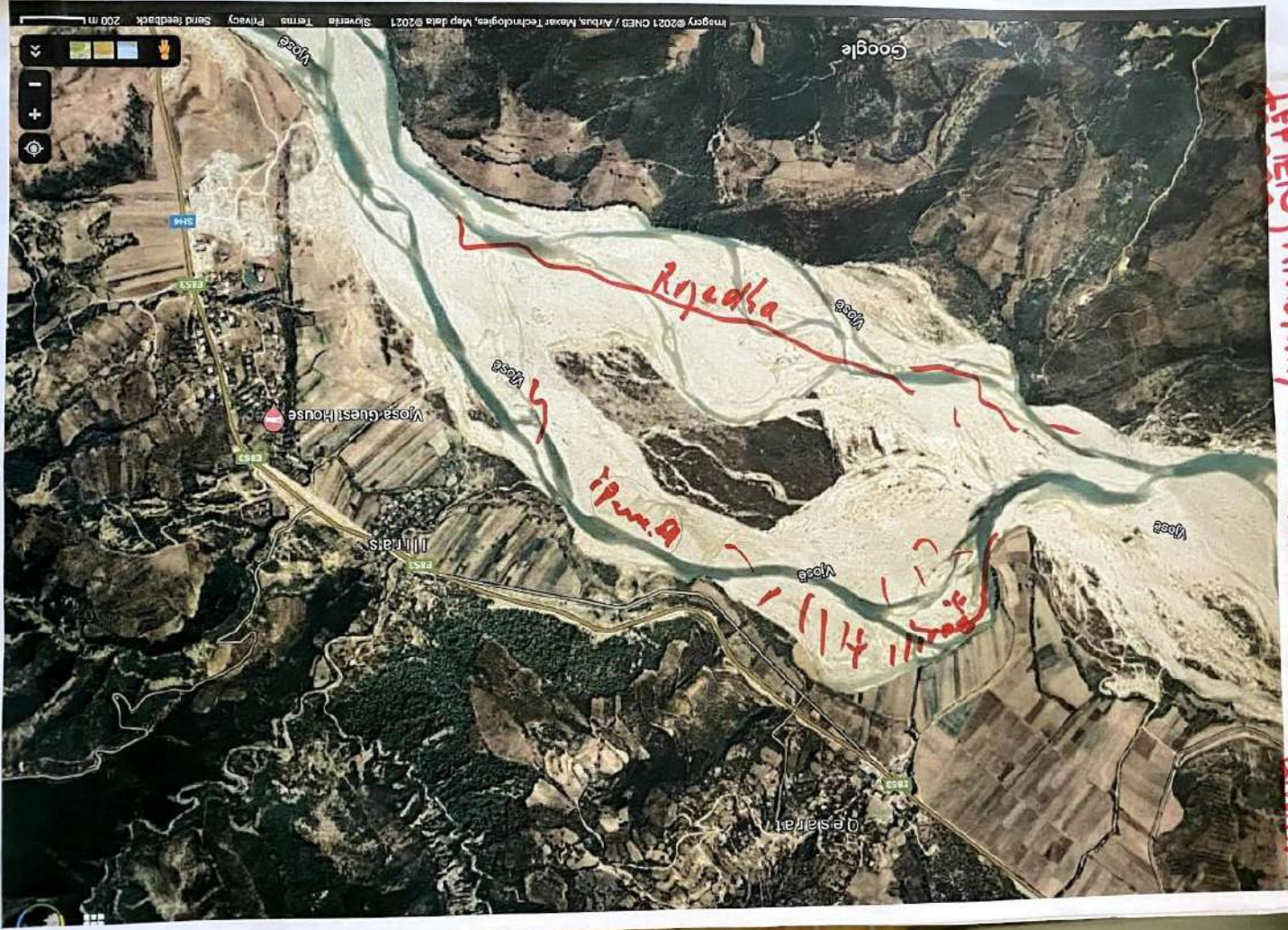


Etnografsko delo

**Kako prebivalci doživljajo in uporabljajo rečno okolje?
Katere spremembe zaznavajo?**

Umeščanje intervjujev v širši kontekst





LETTERS, ANTONIJA KRISTINA

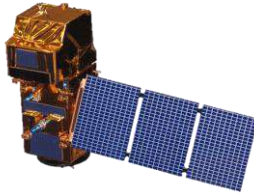
KADITIHO DNEVA

7.7.21



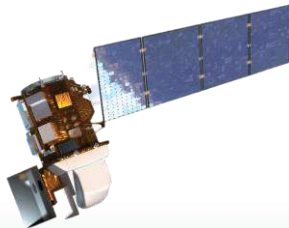
Daljinsko zaznavanje

Sentinel-2

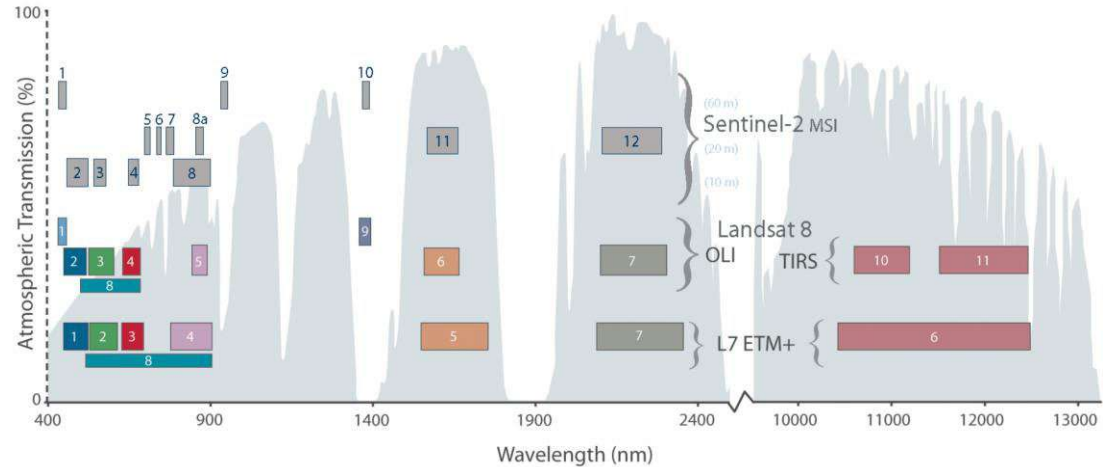


10-20 m
5 dni
od 2015

Landsat



30 m
16 dni
od 1986

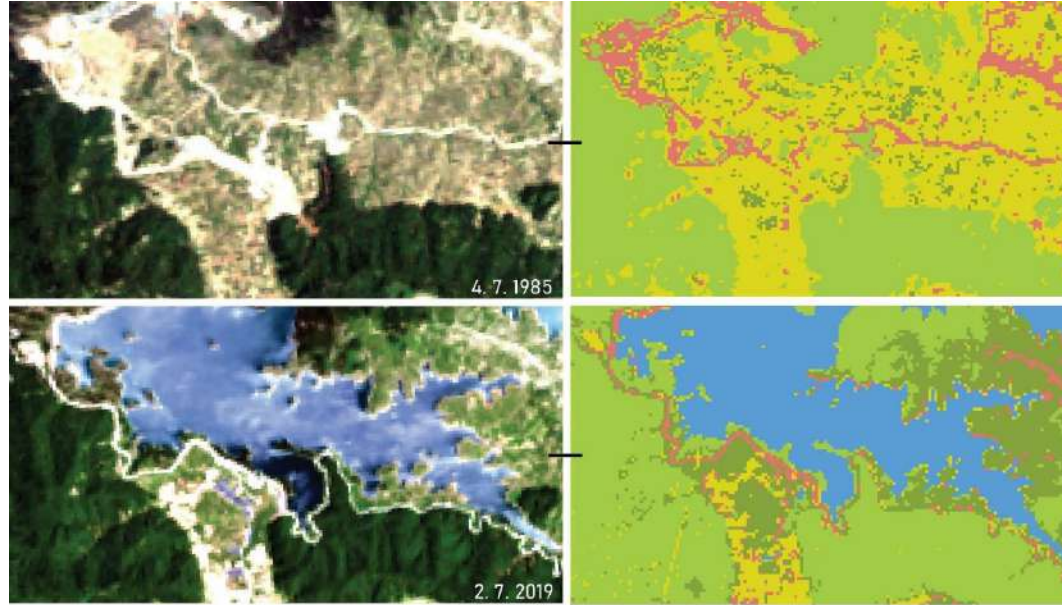


Vir: NASA, 2015.

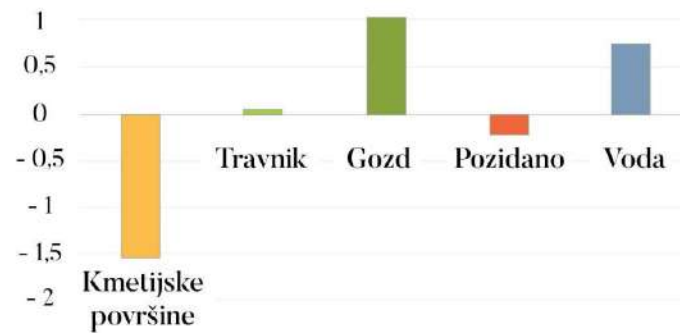
1984

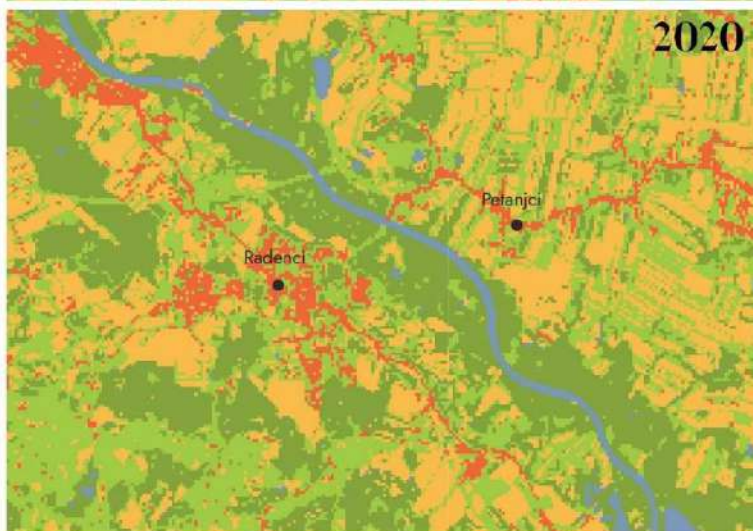
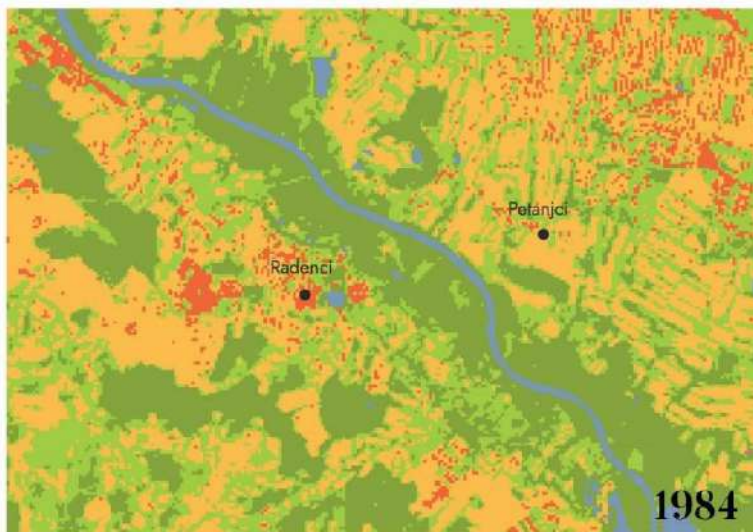
Selenice Landsat



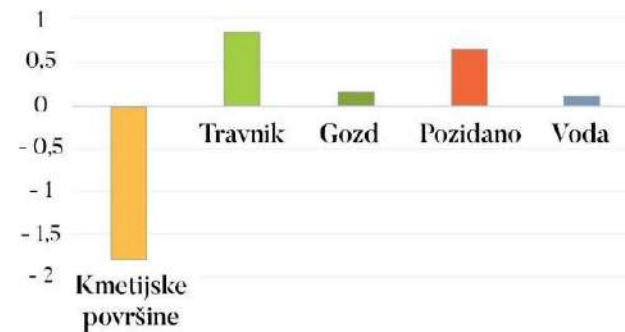


Sprememba v km² (1985 - 2019)



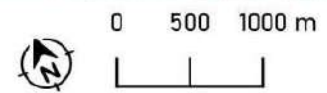
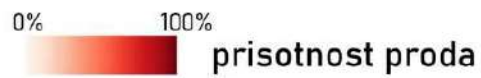
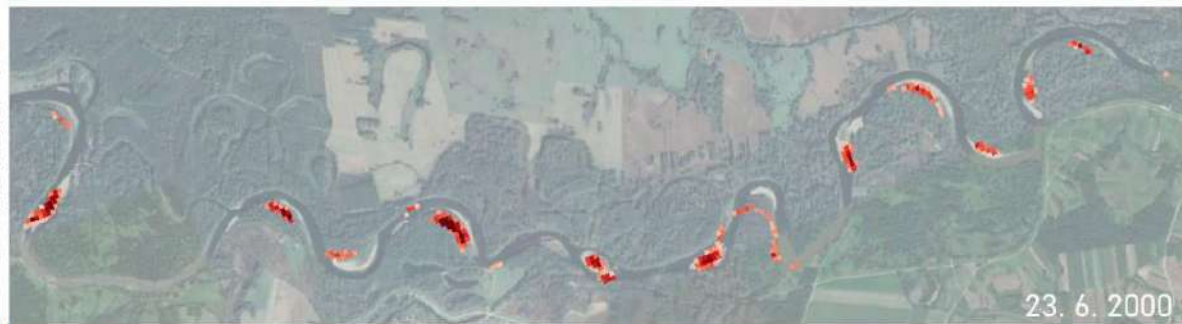


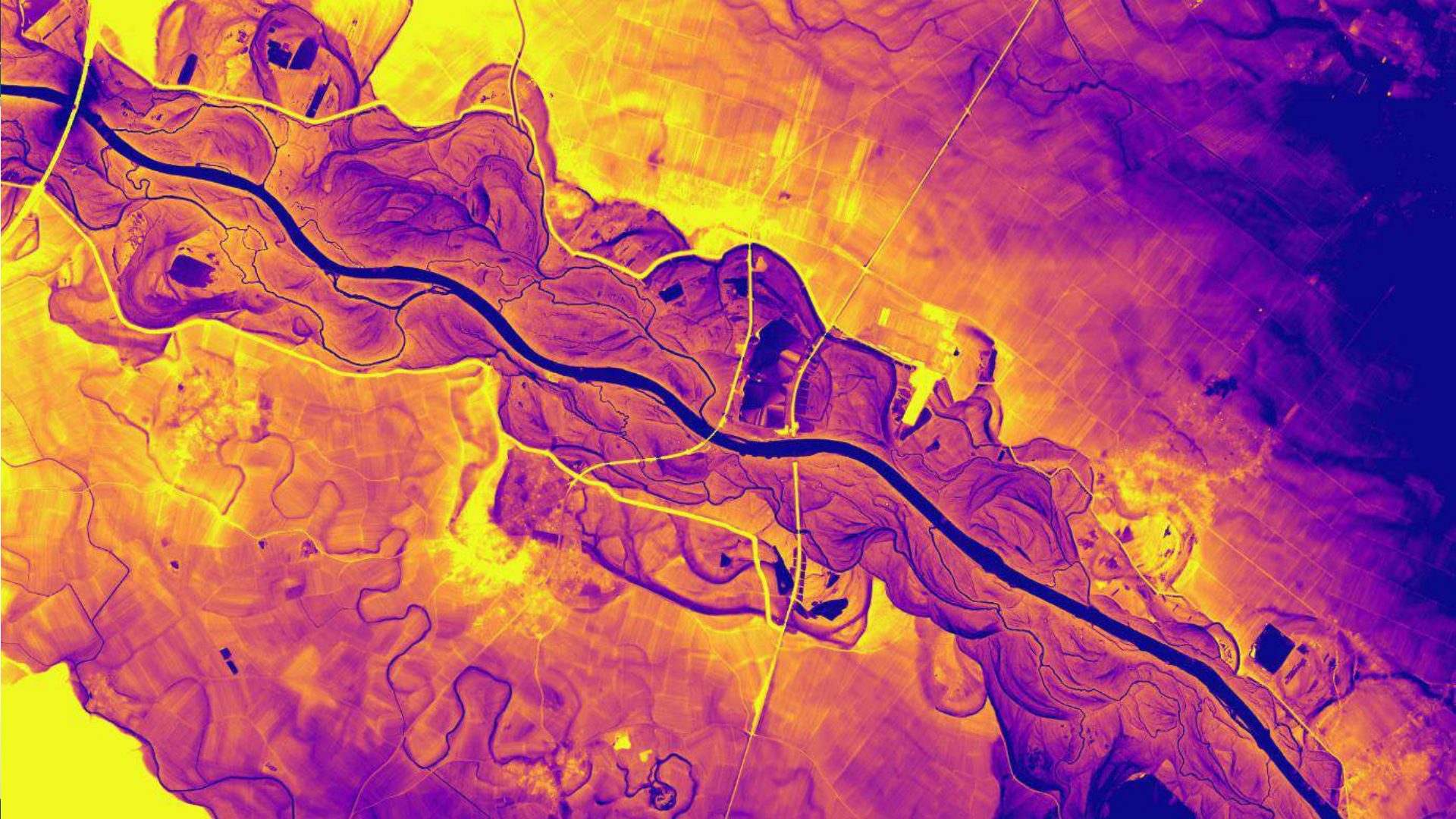
Spremembe v km² (1984 - 2020)



1984 posnetek Landsat 5
SVM klasifikacija
Kappa = 0.95, Skupna točnost = 77 %

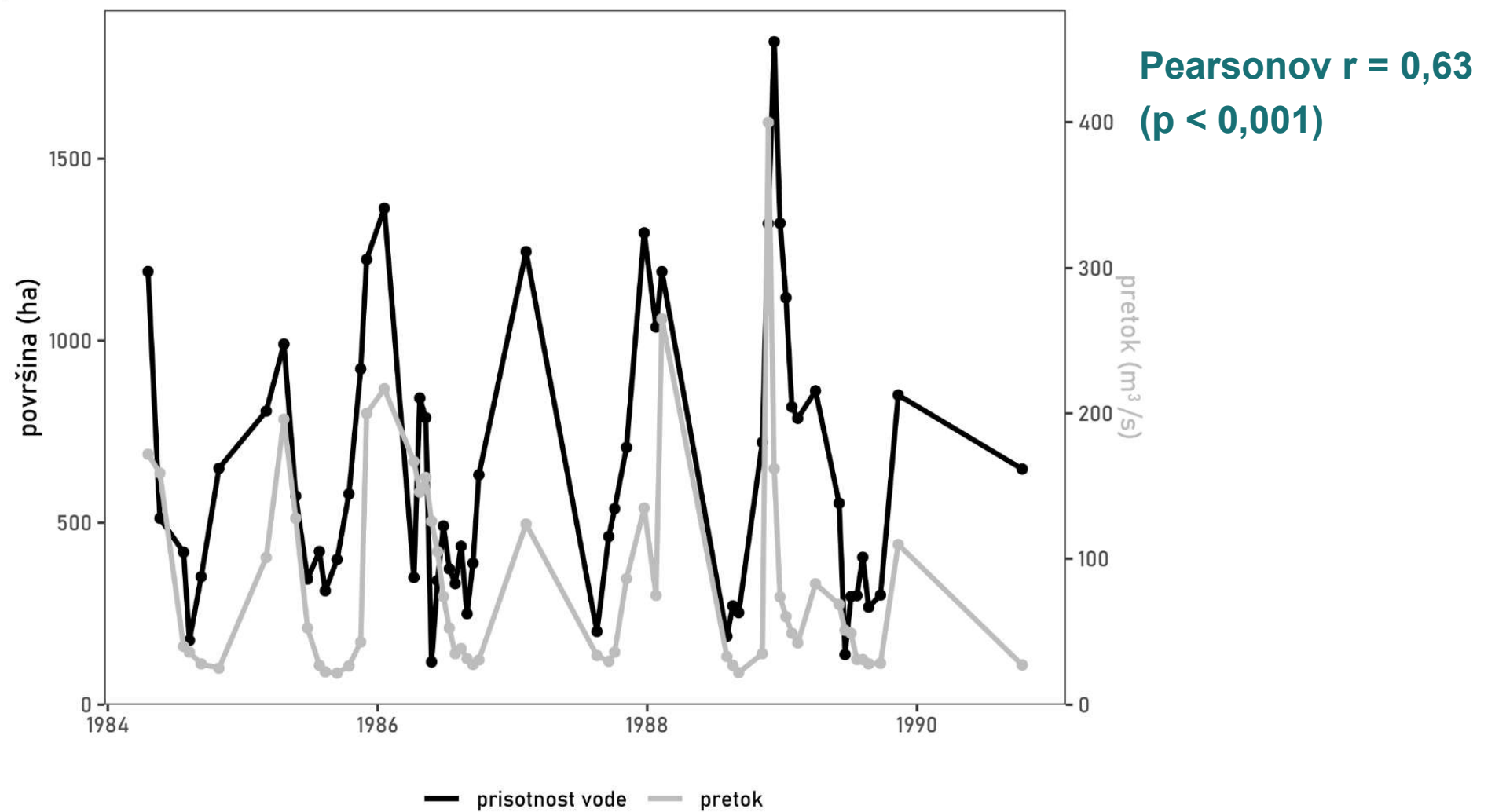
2020 posnetek Landsat 8
SVM klasifikacija
Kappa = 0.95, Skupna točnost = 80 %

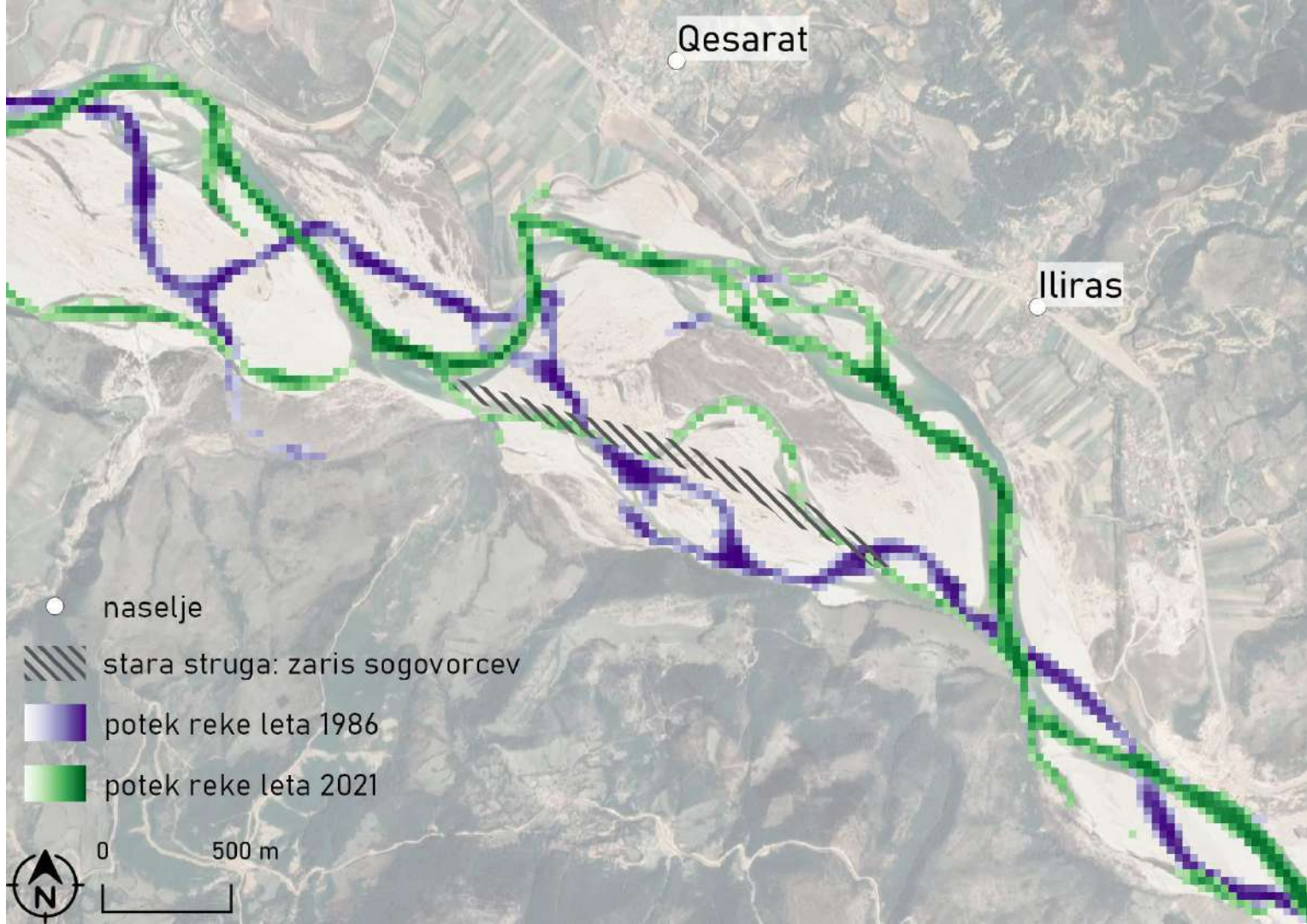




Prepletanje rezultatov

A wide-angle landscape photograph showing a braided river system in a valley. The river consists of multiple channels separated by sandy bars and gravel bars. The surrounding area is a mix of green fields and forested hills. In the background, a prominent mountain peak is visible under a clear blue sky with a few wispy clouds. The overall scene is bright and clear, suggesting a sunny day.





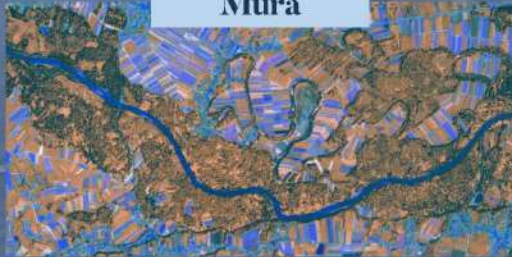


www.riverchange.zrc-sazu.si

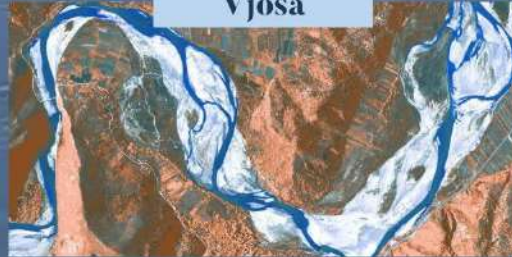
Riverine Environments Following Mura and Vjosa

Riverine environments maps and portrays how changes and continuities of Mura (Slovenia) and Vjosa (Albania) rivers are spatialised in the riverine landscapes and embodied in the daily lives of the people who inhabit them. More..

Mura



Vjosa





Zaključki

- medsebojno usmerjanje pristopov različnih disciplin
 - sprotno prepletanje
- potek dela uporaben za analizo drugih rečnih okolij
- prednostna območja za renaturacijo
 - značilnosti za pestra in stabilna okolja





Hvala za vašo pozornost!

liza.stancic@zrc-sazu.si